



AFRICA'S FASTEST GROWING
REAL ESTATE
SOLUTION COMPANY

PROFILE

www.themayorofhousing.com

I NEED YOUR COLLABORATION TO SOLVE THE HOUSING DEFICIT IN AFRICA



WELCOME
TO YOUR BEST
REAL
ESTATE
SOLUTION





EXECUTIVE SUMMARY

- responsibility of solving the housing deficit problems in Africa through innovative solutions that are simple, secured and sustainable through collaborations that leverage the best expertise in the real estate space
- We are fully incorporated with the Nigeria Corporation Affairs Commissions(C.A.C) with RC number number:171030
- Our strategy seeks to leverage on the best allies and our MASSIVE SALES expertise and experience to enable the home owners get maximum value beyond what the market offer's and to scale that value.
- Our strategy is to help individuals achieve their dreams of owning a home of theirs using "Social Funding" and other best-optimized systems with a very attractive compensation plan.
- We have bespoke solutions for all categories of clients through our innovative Pan-African Housing Solution Models.
- Our ultimate business aim is to help all those that partner with us improve their Lifestyle and achieve the good life in housing.
- Our tampered innovative flexibility and penchant for Organic Growth; makes us the Company of Choice for all VALUE-DRIVEN market penetrative efforts and Customer Satisfaction and Delight Offerings.



ABOUT US!





➤ We are a REAL ESTATE solutions company that helps our clients to optimize on The best available options always.

➤ The Mayor of housing is registered trade mark of the Housing And Construction Mayor Limited and is the fastest rising Real Estate solution brand in Africa that is organic in growth And truly collaborative in core.

➤ The Mayor of Housing is the biggest promoter of real estate social funding in the world Leveraging on the most competent partners

➤ We provide our clientele with best leverage solution that always set up more value than the Prevailing market.

➤ Our passion & drive in delivering exceptional & exponential value in the housing space is why our brand Promise is: WOW!! & HOW?! We always deliver such value that makes the client say: WOW!! And wonder: HOW?!





VISION

To become the number one source of housing solution experts in the world with the largest number of wealthiest and happiest home owners across the globe.



MISSION

Collaborating with the best and most passionate partners in the housing space, to deliver the highest optimum returns to all parties; leveraging on all available options through solutions that are innovative, simple, secured and sustainable. Always giving the most quality for the least cost.



CORE VALUES

Passion
Simplicity
Security
Sustainability
convenience
Fun.





OUR BRAND PROMISE

WOW
& HOW?!

www.themayorofhousing.com

Registrations





“

a Company Is
As Good As The
People It Keeps.”

Mary Kay Ash

OUR

TEAM



MY-ACE CHINA
CEO/ED MARKETING

The Mayor of Housing! AND THE HOUSING KING OF PORT HARCOURT. Is a Real Estate Success Strategist & a Professional Business Solutions Expert who is very passionate about solving the housing problems in Nigeria & the third World- A ONE STOP GUY FOR ALL REAL ESTATE SOLUTIONS! With a B.MLS degree in Medical Laboratory Science from the University of Nigeria ,Nsukka. He is a lifestyle hub franchise called The Mayor of Housing! He created the popular housing Authority show-

The Housing For All Show™ & is the Chief strategist of OWN YOUR DREAM-The Biggest Real Estate & Agric Cooperative in Africa. He represent VALUE/the answer to ALL the Housing problems in Africa & the third world; through collaborations & Solutions that are Simple, Sustainable & Innovative!... He completes THE REAL ESTATE EQUATION! And only those that appreciate VALUE, CONVENIENCE & PEACE OF MIND; call him.... because they know that "HE DOESN'T SELL HOUSES; HE SELLS VALUE!" CONTACT HIM <https://linktree.com/myacechina>



Ibe Collins Azubuiké
ED Cost & Construction

He is a practicing Quantity surveyor whose experiences span over thirty-three years. He is a quantity surveyor with HND from Yaba College of Technology, Lagos. He was further trained on the job in Switzerland when he was working with Parkman Consultants, Nigeria.

As a quantity surveyor and cost control officer, Mr. Ibe Collins worked with Parkman Consultants, Julius Berger, and Dumez. Lastly, he worked with Hydroworks limited, where he rose to the project manager position, where he managed and delivered several Dam, Road, and Building projects. He honourably resigned from Hydro works to engage in private practice, and he had since kept a decent name in practice. Mr. Ibe Collins Azubuiké is a cost control expert who has an eye for details regarding project costing and execution. He is a strict construction ethics adherent with a strong passion in safety measures. His drive, acumen, and work disciplined ethics, externalized in his choice for quality delivery, is his selling factor. Mr. Ibe Collins Azubuiké is an excellent gentleman to the core who believes in discharging his assigned responsibilities to the best of his abilities. He is an indisputable team player, ready to learn and appreciate new ideas.



BARR. STEPHANIE T. OTASOWIE

COMPANY SECRETARY

She's the Managing Director/CEO of LA'SIGNATURE EDGE DESIGNS PLUS LTD, an erudite and versatile business administrator. She is a tireless and innovative project facilitator who brings her knowledge and experience to bare on qualitative business management. A graduate of Law from the University of Jos, Plateau State and the Nigerian Law School, her wide scope of experience in contracting, interior design and real estate management has positioned her adequately to provide soft landing for all clients. A woman of great repute.



OJEH TIMOTHY

ED DIGITAL SALES & ONLINE STRATEGY

He is an African Techpreneur with strong Digital Marketing & Web Development Skills. He understands the internet space very well and knows what small and large business owners want & need online to move their business... He works with local and international partners who specializes in internet marketing! He is part of the team behind Hifinox, Chuuba Nigerian Market place and many more market leading apps. Timothy Ojeh, the trusted name when it comes to digital marketing, social media, online directories and business citations and partners help make those strong connections you need to crush it in your local community! His major digital key is creating strong connections between your island and those bridges that connects people. His results speak Volume!



K. O. BABA

DIRECTOR PUBLICITY

He is one of Nigeria's finest Award Winning Comedians, and has grown to be notably the most sort after and influential entertainer in the city of Port Harcourt. He has a strong passion for raising young creatives. He was recently described as the most publicized brand in the Rivers State entertainment sphere, with his consistent appearances across social, secular, religious, and high-profile events. He has a reputation for delivering clean and classy jokes with a creative, charismatic and entrepreneurial mind. In 2021, he won the most outstanding comedian in the City from GAC Award, in addition to Comedy of the Year in PHMagazine Award. In March 2022, he won Harvoxx Tech

Award as the most tech friendly Comedian in Port Harcourt. KO baba Jorlsen is a business man by all standards, holds a Marketing degree from Rivers State University, and has a creative mind like none other. He own san Event, PR/marketing company: Talkaholic Enterprises. He functions as a Comedian, Business Expert and Administrator, Event Manager, OAPco-anchoring Rhythm93.7FM Comedy House of Assembly, Comperetc. He is rated the most consistent event host in Rivers State. His annual youth conference known as Kobaba Youth Convention, holds annually to commemorate the International Youth Day, gathers and empowers thousands of youths across the Nige rDelta region. His comedy tagged "Mayor Of Pitakwa" is without doubt, Port Harcourt's largest and most popular comedy event brand. He recently soldout the 5000 capacity Auditorium, the only entertainer so far to achieve that feat. Kobaba currently resides in PortHarcourt, RiversState, and is a happy husband and father.



CHIDINMA OKECHUKWU
ED HUMAN CAPITAL DEVELOPMENT

Chidinma Is an astute professional and has been a Private Banker/Wealth Manager for over 7years; she is a Bsc degree holder in Industrial Chemistry from Imo State University, Owerri where she graduated with Second Class honor sin 2011. She has a Diploma in Sustainable Business from in Business Administration from Allison in 2020. She is an Associate member of Chartered Institute of Bankers of Nigeria (CIBN).

Her robust experience cuts across Private banking, Wealth management, Customer experience champion and business development.

Chidinma Okechukwu has attended various courses and professional trainings physically in Nigeria and online including Design Thinking for Beginners ,Enterprise Design Thinking for Practitioners ,Google Analytics for Beginners, Advanced Google Analytics, Google Analytics for Power Users, Sales Leadership, High Performance Mindset Training, Access Bank Service Excellence School Program.



ENGR. AJABIOWE M. VICTORY
ED TECH/AUTOMATION

Engr. Ajabiowe is a seasoned Electrical/ Electronics Engineer with over 10 years of expertise in Extra low volage services.He Attained his first diploma (HND) in Electrical/ Electronics from Kwara state polytechnic, and later PGD in Information Technology, With his M.Sc. in view in Communication Engineering. Engr victory has worked with various construction companies as An Electrical Engineer / IT specialist: -Prodem Nigeria limited, Copi-need

Nigeria limited, MBX, Omni controls. He is a seasoned system integrator with vast Knowledge on different brands on Home and industrial Automation, with certifications to commission projects and Train personnel on different products. He pays attention to customers needs, with a tailored design to solve personalized problems using the best range of Products. Engr victory has an eye for problem solving with smart devices and control to provide the life style, security with uttermost simple to use devices.



JOYCE SIM BALA

Executive Director of KYALKYA LIMEDIA

Joyce is the Executive Director of KYALKYA LIMEDIA, She is passionate about the creative industry particularly the media. With a background in English and Literature Studies from Nassarawa State University and a postgraduate diploma in Journalism from International Institute of Journalism Abuja, Nigeria. Joyce and her team of staff are putting touch of glitter and shine through Kyalkyali media which includes media

marketing, content creation, events management, television broadcasting etc.

Joyce Sim Bala Produces and host a talk show titled 'Right turn with Joyce' showing on ASOTV, and has interviewed some top government officials, policy influencers from various sectors of the country.

Aside from her involvement with media, Joyce believes that through Kyalkyali Media, we can change the narratives by rewriting our stories.



MR. UGO REGINALD O.

ED FINANCE AND ADMIN

He has a very rich professional cum academic background; he graduated with a Bsc in Accounting from the University of Nigeria Nsukka, where he graduated with Second Class honors in 2003. He holds a master degree in Business Administration from Cardiff Metropolitan University Wales United Kingdom in 2012 where he graduated with Merit and Distinction in his Dissertation. He is a member institute of Chartered Economists of Nigeria (I.E.C.N)

A Compliance and Internal control officer with over 12years' experience of

providing comprehensive high quality prudential guideline and accounting support services to businesses. Utilizing his expertise in compliance and internal control management. He has been pivotal to ensuring businesses under his control are equipped with the tools necessary to meet aggressive sales growth plans. I am expert at financial analysis, Identification of control lapses and strengthening operational processes & weaknesses, Create and improve homogenous Compliance Culture that aligns with the control and business objectives of the Organization, strategic management and implementing internal control measures to ensure adherence to compliance whilst minimizing business risk.

Mr. Reginal has acquired sound professional training and exposure in some of Nigeria's most reputable financial institutions. He is the MD/CEO of Ikpo Boss Integrated Recourses Ltd. and also a Director at Uro Frans International Ltd, already proven ability as a successful business development specialist, a business coach to potential entrepreneurs and a mentor to a spiring leaders.

He is married.

OUR BOARD OF ADVISORY



IFEOMA CATHERINE NWAIWU
MEMBER ADVISORY BOARD



DR UKPA NWANEKA
MEMBER ADVISORY BOARD



OUR LEGAL PARTNERS

CHRIS OKEKE & CO

Legal Practitioners, & Notaries Public.

27/29, King George V Road, 5th Floor. Onikan. Lagos

[08032012944.chris.](tel:08032012944)

okeke@yahoo.co.uk

Website: www.theshalomlawpartners.com



Turkgrup
construction int'l co. ltd.

OUR **FOREIGN**
T E C H N I C A L
PARTNERS

Turkgrup construction
int'l co. ltd.

Plot 860,
B 08 Cadastral Zone
JAH I DISTRICT, ABUJA
Phone: +234 803 542 4013
trgposta@gmail.com

www.themayorofhousing.com

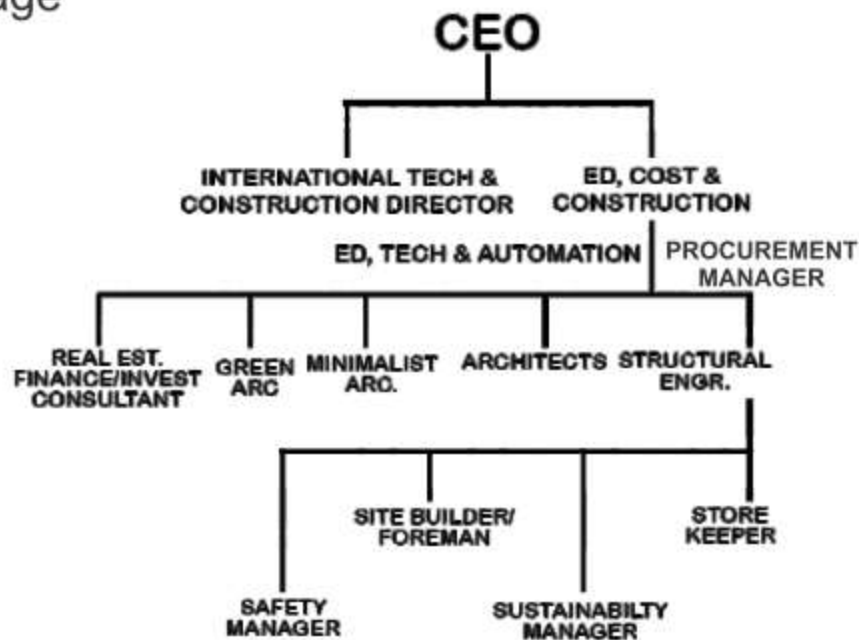


OUR CORE

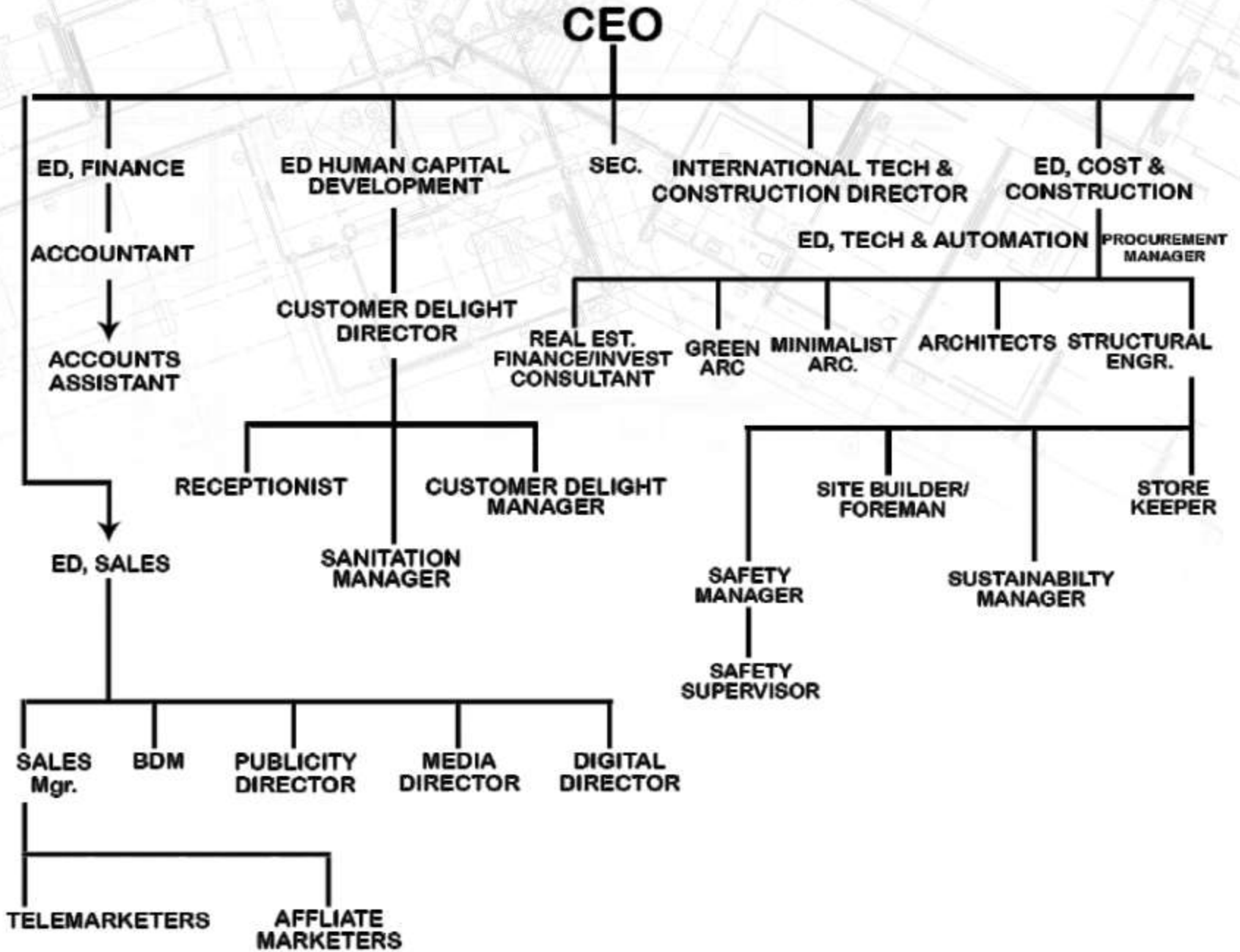
STRENGTH

Our Core Strength

What makes us unique with valuable advantage Over all others in the industry is our construction Team led by our ed cost and construction; Surveyor ibe collins azubike and superintended by our International tech and construction director; Mr hussain khutay to ensure innovative international Best practices in construction. We also probably The only housing company to retain the full services Of a certified green architect to ensure our Developments and sustainable and environmentally Up to date with global green standards.another Unique retainership is our minimalist architect that Ensures our low cost developments are efficient And built to suit contemporary standards in the Emerging genre of architecture called minimalism Architecture. Also with our real estate Finance/investment consultant who has a harvad Master's degree in real estate finance, our projects Are insulated from failures due to wrong financial Projections/calculations. Hence our core strength Is in having a construction team of some of the best Professionals in the field in this unique Organigramimage



OUR ORGANIGRAM





OUR PROTOTYPE

Our prototype is a four floors super luxury google-smart Eco-friendly four bedroom linked-terrace duplex with a rooftop private Swimming pool and a bq en-suite with a solar-powered elevator on each Unit and each unit sitting on 300 square meters. It's a one-of-a-kind design That has been tickling the fancy and the pockets of our off-takers!



**OUR
PROTOTYPE**





PROTOTYPE VIEWS

FRONT VIEW

**ENTRANCE
VIEW**



**FRONT
VIEW**



**AERIAL
VIEW**



OUR

**BUILDING
PLANS**

www.themayorofhousing.com

BUILDING PLANS

SOUTH SIDE ELEVATION

EAST SIDE ELEVATION

CLIENT'S NAME
PROJECT TITLE
ARCHITECT'S SEAL
NOTES: 1. ALL DIMENSIONS ARE IN METERS. 2. ALL DIMENSIONS OF THIS ARCHITECT'S SEAL. 3. ALL DIMENSIONS OF THIS ARCHITECT'S SEAL. 4. ALL DIMENSIONS OF THIS ARCHITECT'S SEAL. 5. ALL DIMENSIONS OF THIS ARCHITECT'S SEAL. 6. ALL DIMENSIONS OF THIS ARCHITECT'S SEAL. 7. ALL DIMENSIONS OF THIS ARCHITECT'S SEAL. 8. ALL DIMENSIONS OF THIS ARCHITECT'S SEAL.

NORTH SIDE ELEVATION

WEST SIDE ELEVATION

CLIENT'S NAME
PROJECT TITLE
ARCHITECT'S SEAL
NOTES: 1. ALL DIMENSIONS ARE IN METERS. 2. ALL DIMENSIONS OF THIS ARCHITECT'S SEAL. 3. ALL DIMENSIONS OF THIS ARCHITECT'S SEAL. 4. ALL DIMENSIONS OF THIS ARCHITECT'S SEAL. 5. ALL DIMENSIONS OF THIS ARCHITECT'S SEAL. 6. ALL DIMENSIONS OF THIS ARCHITECT'S SEAL. 7. ALL DIMENSIONS OF THIS ARCHITECT'S SEAL. 8. ALL DIMENSIONS OF THIS ARCHITECT'S SEAL.

C

BUILDING
PLANS



GROUND FLOOR PLAN (PRESENTATION DRAWING)

C

BUILDING PLANS



FIRST FLOOR PLAN (PRESENTATION DRAWING)

3

PLANS

BP



SECOND FLOOR PLAN (PRESENTATION DRAWING)

C

BUILDING PLANS



PENTHOUSE FLOOR PLAN (PRESENTATION DRAWING)

ADDRESS POSSIBILITIES!



www.themayorofhousing.com



THE MAYOR OF HOUSING



OTHER PROTOTYPE

Our prototypes are same across all locations and are updated every 24months. while the linked-terrace duplexes are our generic design, we have other prototypes! and they come with a generic names codes of:

LINKED-TERRACE & FULLY DETACHED= THE ELITE HAVEN

SUPER-DUPLEX = THE BOSS HAVEN



OUR

FULLY DETACHED DUPLEX

It's a fully detached genre of the generic plan with wider footprint and having the 450sqm land and 600sqm land variants!!!



THE SUPER-DUPLEX

THE BOSS HAVEN

Is a 5 bedroom imperial dream retirement home for any senior citizen with taste and features super luxurious simple but very exotic features!



OUR UNIQUE SELLING POINTS



INNOVATION

we are innovation driven and not afraid to express same. we are the first company to innovate the social funding house ownership model in the world. The first company to construct duplexes with a rooftop private swimming pool on each unit in Nigeria. The first company to innovate solar-powered elevators in Nigeria.

we have the courage to make the sacrifices necessary for organic growth and are not afraid of the huge loses of getting it wrong and starting all over again to ensure you get the best. Occasional losses while ensuring optimum value delivery to you; is not new to us! Afterall, you are worth the sacrifice and more!



SACRIFICE

**"The human race built most nobly when limitations were greatest."
Frank Lloyd Wright**

COLLABORATION



Our major strength is collaboration with the best in the industry and leveraging on our peoples skills. We are not just in the housing business; we are in the people business. hence, we priotize people over processes and people over profits because people are the real profits!

INGENUITY



As much as we are international in tech and innovation, we remain very indigenious in applications and ingeniously tweak our solutions to suit the african in africa and not just dump solutions on people without consideration for local relevance and applicability.

VALUE



We are so value driven and value-centric in all that we do that we don't implement anything if it doesn't deliver value to all involved. That's why we don't sell houses/lands... We sell value!

THE HUMILITY/FLEXIBILITY TO LEARN AND GROW!



This might be our biggest strength! We are not only humble enough to learn from our mistakes; we are flexible enough to learn from others. Hence our penchant for collaborations. We never know enough and we will never settle! We keep evolving and growing within valuable bounds.



HSE

HEALTH, SAFETY & ENVIRONMENT (HSE)

We are so passionate about HEALTH, SAFETY AND ENVIRONMENT that we not only have a SAFETY MANAGER but we are probably the only company with a SUSTAINABILITY MANAGER! And to buttress our emphasis on HSE, we have a full safety booklet: The Mayor of Housing's OPERATION SAFETY BOOKLET which is usually attached to all our important documents and made available to all parties to all our projects.

***for details on our hse policy framework kindly refer to the mayor Of housing's operational safety booklet**



OUR STRATEGIC PARTNERS



**Access
Bank**

CHRIS OKEKE
ESQ & CO



The background of the entire image is a detailed, light gray architectural floor plan or site plan, showing various rooms, corridors, and structural elements. In the lower half of the image, a dark blue, winding road with white dashed lines curves across the frame, creating a sense of movement and direction.

Our
JOURNEY
SO **FAR**

www.themayorofhousing.com

OUR JOURNEY SO FAR



OUR JOURNEY SO FAR



Our primary Target Markets are Nigerias in Diaspora and this explains why Quality and Global Best Standards are critical to us at The Mayor of Housing.



JOURNEY SO FAR



GUZAPE
PROJECT
VIEW
(ABUJA FCT)



OUR JOURNEY SO FAR

Our Lagos Projects VIP
& ABC Gardens via our
partners Lifestyle Hub
and Pertinence Limited.



JOURNEY SO FAR

Area View of our Port Harcourt Project in partnership with Lifestyle Hub and Reef Court estate; with Rooftop Swimming Pool, while under construction.



MY-ACE CHINA

THE MAYOR OF HOUSING

Is a seasoned Real Estate Success Strategist and a Professional Business Solutions Expert who is very passionate about solving the housing problems in Nigeria and the third World- A ONE STOP GUY FOR ALL REAL ESTATE SOLUTIONS

With a B.MLS degree in Medical Laboratory Science from the prestigious university of Nigeria. Nsukka He owns a lifestyle asset hub limited franchise called The Mayor of Housing! He is The creator of the popular housing Authority show The Housing For All Show & the Chief strategist of OWN YOUR DREAM-The Biggest Real Estate & Agric Cooperative in Africa. An industry expert that partners top Global projects like the Centenary city, LION BUSINESS PARK, Eko Atlantic City, inter alia.

He represents VALUE & the answer to ALL the Housing problems in Africa & the third; world through collaborations & Solutions that are Simple, Sustainable & Innovative!

The Mayor of Housing stormed Port-Harcourt in April 2021, making waves in the housing industry and has since been a big bang with the introduction of SOCIAL FUNDING to the Port-Harcourt Real Estate space.



WHO IS THE MAYOR OF HOUSING?

ACHIEVEMENTS

- INNOVATED SOCIAL FUNDING MODEL!
- HELPED 2 PERSONS OWN A 150MILLION NAIRA SMART DUPLEX WITH JUST 5MILLION NAIRA IN GUZAPE ABUJA AND PORT-HARCOURT
- HELPED 3 PERSONS OWN A 150MILLION NAIRA SMART DUPLEX FOR JUST 25MILLION NAIRA ONLY!
- HELPED TAKE LIFESTYLEHUB FROM ZERO TO OVER BILLION NAIRA IN ASSETS IN 3YEARS!
- A MARKETING CONSULTANT TO THE LION BUSINESS PARK ENUGU (THE BIGGEST INDUSTRIAL FREE TRADE ZONE IN AFRICA)
- A MARKETING CONSULTANT TO THE CENTENARY CITY PROJECT ABUJA.
- THE NUMBER 1 PERSONAL REAL ESTATE BRAND IN PORT-HARCOURT 2021.
- THE FIRST REAL ESTATE COMPANY TO LAUNCH TWO ESTATES ON THE SAME DAY IN PORT HARCOURT AND THE HOUSING KING OF PORT HARCOURT 2021.





The Mayor Of Housing was a founding director in LifeStyle Hub and resigned in 2020 to start the Mayor Of Housing, which is a marketing franchise and a partner to the LifeStyle Hub.



LifeStyle Hub acquires lands via non-cash joint venture agreement purchases of sixty/forty (60%/40%). Where LifeStyle Hub will build and give forty percent(40%) of the developed houses to the land owner in exchange for full ownership of the land. Hence that, that is why this proposal.

HISTORY OF JOINT VENTURE FACILITATED BY THE MAYOR OF HOUSING;



1) 2019 JUNE: ALHAJI GIDADO (LifeStyle Hub first estate, Guzape, Abuja).

-PLOT SIZE: 2,100SQM

-PRICE OF PLOT = 9GMILLION NAIRA

-NUMBER OF UNITS DEVELOPED BY LIFESTYLE HUB = 7UNITS

-4% TO ALHAJI GIDADO = 3 UNITS

-PRICE PER UNIT IS FINISHED SMARTDUPEL =100M(THEY are smaller than present prototype)

-TOTAL FORTY PERCENT (40%) EQUITY OUTPUT FOR GIDADO 300MILLION NAIRA

HISTORY OF JOINT VENTURE FACILITATED BY THE MAYOR OF HOUSING;



2.2020 DECEMBER: THE REEFCOURTS Estate

PLOT SIZE = Seven(7) plots.

ORIGINAL PRICE PER PLOT = Thirty five(N35M) million naira. For seven (7) plots-two hundred and forty five (N245M) million naira.

NUMBER OF SMARTHOMES TO BE BUILT BY LIFESTYLE HUB = Ten (10) units.

Forty percent(40%) to REEFCOURTS = Four (4) units.

COST PER FINISHED SMARTDUPLEX UNIT OF LIFESTYLE HUB = one hundredand fifty(N150M) million naira.

TOTAL FORTY PERCENT (40%) EQUITY OUTPUT FOR REEFCOURTS = one fifty x four equals six hundred (150x4 = N600M) million naira.

CAPITAL GAIN: = six hundred minus two hundred and forty five naira equals three hundred and sixty five million naira (600-245-N365M).

Project timeline/ Gestation: Two (2) years (2020 to 2022).

HISTORY OF JOINT VENTURE FACILITATED BY THE MAYOR OF HOUSING;



3) 2021 DECEMBER: Sir Gabriel Tobi land, THE RIF-EXTENSION ESTATE;

PLOT SIZE= twenty (20) plots.

OUTRIGHT PRICE PER PLOT = twenty (20) million naira times(x) twenty (20) million equals four hundred (N400M) million.

NUMBER OF FINISHED UNITS OF SMARTDUPLEXES TO BE DEVELOPED BY LIFESTYLE HUB= thirty(30) units.

FORTY PERCENT (40%) EQUITY TO SIR GABRIEL TOBY (the land owner)= twelve (12) units.

COST PER UNIT OF FINISHED SMARTDUPLEX = one hundred and fifty (N150M) million.

TOTAL COST OF FORTY PERCENT (40%) EQUITY TO BE HANDED OVER TO THE LAND OWNER = One fifty(150) times twelve equals(12) one point eight (N1.8B)billion.

CAPITAL GAIN = one point eight (N1.8M) billion minus four hundred (400) million equals one point four (N1.48) billion.

PROJECT TIMELINE/GESTATION:= Two to three(2-3) years,

HISTORY OF JOINT VENTURE FACILITATED BY THE MAYOR OF HOUSING;

THE RIF-EXTENSION-2

.Our proposed land with WILLBOUGH DE-ULTIMATE.

PLOT SIZE= Twenty (20) plots.

ORIGINAL PRICE PER PLOT = Ten (10) million naira, cost of land making two hundred (200) naira. Fencing- twenty (20) million naira. 5% Commission of Purchase-Ten (10) million naira, total of two hundred and thirty(N230M) million.

EXPECTED NUMBER OF UNITS OF SMARTDUPLEXES TO BE DEVELOPED BY LIFESTYLE HUB= thirty (30) units.

FORTY PERCENT (40%) TO US (We will register a new consortium consisting of forty percent (40%) Wilbough and thirty percent (30%) to Barr Stephanie and thirty percent (30%) to The Mayor Of Housing)= twelve(12) units).



HISTORY OF JOINT VENTURE FACILITATED BY THE MAYOR OF HOUSING;



PRICE PER UNIT = One hundred and fifty (150) million

FORTY PERCENT (40%) EQUITY = Twelve (12) times (x) One hundred and fifty (150) million equals one point eight (N1.8B) billion naria.

CAPITAL GAIN = One point eight (N1.8B) billion minus two hundred and thirty (N230M) million equals to one point five seven (N1.57B) billion.

EQUITY SHARING = Forty percent (40%) of capital gain to Willbough is six hundred and twenty eight (N628M) million naria.

Percentage capital gain- two hundred seventy three (273%) Percent.

Gestational Period - Two to three (2-3) years.



FOLLOW US ON SOCIAL MEDIA

 www.facebook.com/my-ace china

  [@myace_china](https://twitter.com/myace_china)

 www.linkedin.com/my-ace china

 www.youtube.com/my-ace tv



OUR COMMITMENT TO **COMMISSIONS**



We are a people business and reward people always and in all ways! so if you have the funds to take advantage: call us! but if you don't have the funds to take advantage; recommend us to someone and when that person buys; your 5% commission from us is sacrosanct





OUR LOCATIONS:

THE ELITE HAVEN®
Premiere, Chisco Lekki, Phase 1

THE ELITE HAVEN®
Premiere, summit Hills, Calabar.

THE ELITE HAVEN®
Premiere, dubai Estate, Awka.

THE RIF-EXTENSION ESTATE,
Seltex Road, Off Peter Odili Road,
Portharcourt.

THE CATHEDRAL GARDEN®
Opposite Salvation Ministries
Cathedral, Airport Road,
Portharcourt.

THE ALESA HIGHLANDS®
Estate,woji-alesa-onne Road,
alesa, Portharcourt.

For more enquiries call
+234 809 337 8525

**THE UYO SMARTCITY
PREMIERE,**
Ewet Housing, Uyo.



“
**THE DIFFERENCE
BETWEEN A
HOME & HOUSE
IS RENT**
”

**CONNECT
WITH US ON
SOCIAL
MEDIA**

-  WWW.FACEBOOK.COM/MY-ACE CHINA
-  WWW.LINKEDIN.COM/MY-ACE CHINA
-  WWW.YOUTUBE.COM/MY-ACE TV
-   @MYACE_CHINA
-  **+234 809 337 8525**

**THINK
HOME
THINK
MAYOR
OF HOUSING**

www.themayorofhousing.com

www.themayorofhousing.com

ABUJA

No. 3 ATBARA STREET,
OFF ADETOKUNBO
ADEMOLA CRESCENT
FCT NIGERIA.

RIVERS STATE

NO. 298B PETER ODILI
ROAD, PORT HARCOURT
NIGERIA.

LAGOS

LEKKI, LAGOS
NIGERIA.

UNITED KINGDOM

104, COTSWOLD
GARDENS, BARNET,
LONDON,
C/O +44743 890 2518

For more enquiries call
+234 809 337 8525

www.themayorofhousing.com

